

King's Park Secondary School Information for Families and Friends



www.kingspark-sec.glasgow.sch.uk

June 2012

Dear Parents and Carers

Another school session has flown past, and we are rightly proud of the many achievements of our pupils. Our school website will keep you up to date.

This newsletter includes information about staff who are leaving. I am sure you will join me in wishing them well for the future. In particular, I would like to pay tribute to Mrs Logan. Among her strengths are her innovative work with S5/6 which was praised by the inspection team, and her leadership in reviving our new smart school uniform. Her professionalism and hard work will be greatly missed.

You may know that I am retiring at the end of the session. It has been a privilege to look after our school for six years. Thank you for your support.

I am certain that King's Park Secondary will continue to go from strength to strength under the leadership and vision of a new head teacher.

The head teacher's post has been readvertised, and an appointment should be made early in the new session. **In the meantime, we are pleased to let you know that Mr Tom Feasby will be acting head teacher from Monday 13 August.**

Wishing you an enjoyable summer, and wishing your sons and daughters great success in the future.

Kind Regards

Margaret Barr
Head Teacher

From the website ...



RETURN LOCKER KEYS BY FRI 22 JUNE - RECEIVE £5

- All pupils must empty their lockers and return the key to the school office by Friday 22 June.
- If they wish a locker for one school year, pupils pay £10 in August, and they receive £5 back when they return the key to the school office in June.
- On Monday 25 June, all lockers will be emptied, and the contents will be given to charity.
- In June 2012, lockers will again be allocated for the school year.
- If this arrangement causes difficulty, please contact the school.

Special School Uniform Evenings will take place again this year, in M&S, Argyle Street

- Thursday 21st June – 5 pm to 7 pm
- Thursday 5th July – 5 pm to 7 pm
- Thursday 9th August – 5 pm to 7 pm

Online Ordering – 'My School Uniform' (end June 2012)

As well as purchasing in store, and ordering through the usual M&S website, it will also be possible (from end June 2012) to order school uniform online from an M&S website especially for King's Park Secondary. You will receive the same discounts and special offers as the main site. Go to:

- www.marksandspencer.com
- Menu along the top – choose **School Uniform**
- In the box – choose **Your School Uniform**
- Look for our school crest and choose **King's Park Secondary**



DATE FOR YOUR DIARY

**Annual General Meeting
of the Parent Forum
Tuesday 4 September 2012 at 7 pm
In the Assembly Hall**

STAFF NEWS

Some staff are retiring at the end of the session. In addition to Mrs Barr, we bid farewell to:

Ms Deborah Brady, Principal Technician
Mrs Sandra Fairley, Business Education
Mrs Margaret Logan, Depute Head Teacher

Ms Brady, Mrs Fairley and Mrs Logan have given many years of service to King's Park, and have worked very hard for the children and families of our school community. We should like to record our grateful thanks to all of them for their work, and wish them all a happy and fulfilling future.

Mrs McDowall, and Ms Waddell are taking a career break – coincidentally they are both going to Australia for a year. Best wishes to both of them for a successful year.

We also say good-bye to the probationer teachers who have been with us for the past session – Mr Greer and Mr Sherry. Best wishes and thank you.

Each year, several temporary staff also work with us. We hope they will be able to return, but we may not know until August, if they will be with us again next year. Thanks to them for all their hard work.



School Calendar

Wed 27 June
Close for summer at 1 pm.
Non-uniform day - 50p for charity

Mon 13 August – Session 2012-13
Inservice Day 1 for teachers

Tue 14 August
Inservice Day 2 for teachers

Wed 15 Aug
Pupils return to school

Our School Improvement Plan 2012-13

Our priorities for session 2012-13 onwards take account of:

- Recommendations from HM Inspectors from Education Scotland, who inspected our school in February.
- National developments in Curriculum for Excellence, and the new National Qualifications
- Our continued focus on meeting the needs of every learner
- Our continued focus on improvement.

A draft School Improvement Plan has been prepared and if you would like a copy, please contact the head teacher. Our school priorities are given below. We welcome your comments on these priorities.

Curriculum for Excellence

Our main focus continues to be the implementation of Curriculum for Excellence. Curriculum for Excellence isn't only about the courses (Experiences and Outcomes in Languages, Mathematics, Expressive Arts, Health and Wellbeing, Religious and Moral Education, Sciences, Social Studies and Technologies); it's much wider than that. It is also about building a curriculum which gives:

- Challenge and enjoyment
- Breadth
- Progression
- Depth
- Personalisation and choice
- Coherence
- Relevance

... and which develops the following capacities in children and young people: that they should develop into:

- Successful learners
- Confident individuals
- Responsible citizens
- Effective contributors

We are going to focus on:

- Developing S3 courses to complete the broad general education.
- Preparing for the senior phase
- Developing a strategy for partnership working.
- Developing Literacy across learning, Numeracy across learning, and Health and wellbeing across learning
- Developing the transition from primary school
- Tracking and profiling

Other important priorities are:

- **Meeting the needs of all learners.** Promoting employability skills in all young people. Differentiation. Personal support. Positive support. More choices, more chances. Improving the engagement of parents.
- **Improvement through self-evaluation and leadership.** Further develop self-evaluation and leadership in staff and pupils.

King's Park Secondary School

OUR DRESS CODE

BOYS' UNIFORM

- School tie (on sale from the school office - £5)
- Plain white school shirt which buttons up to the neck - short or long sleeves
- Black school trousers
- *Trousers must be black school trousers, eg Marks and Spencer T764620D or T763600B. Boys are not permitted to wear tight trousers, leggings, shorts, jeans, cargo pants or fashion trousers of any kind.*
- Black socks
- Plain black school shoes, or plain black boots suitable for school
- Black v-neck school sweater or black school cardigan or black plain zipper
- **OUTDOOR WEAR** - Following recommendations from the pupils, a hooded sweatshirt for outdoor wear will be permitted, ONLY if it is plain black with a full-length zip, so that the tie can be seen at all times. Like all outdoor garments, it must be removed in class. Pupils should not wear brightly coloured sweatshirts in school.

GIRLS' UNIFORM

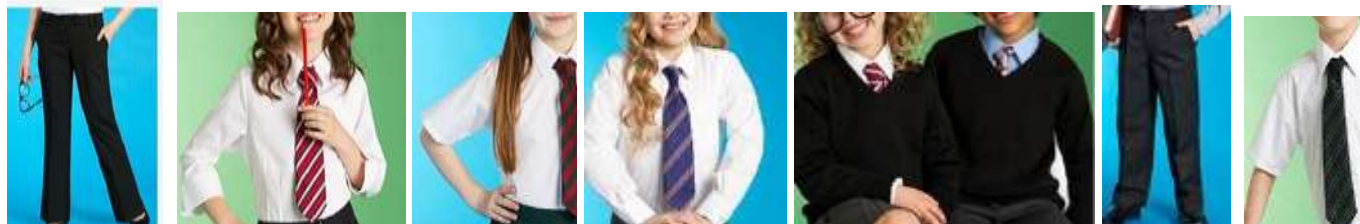
- School tie (on sale from the school office - £5)
- Plain white school blouse which buttons up to the neck – long, short or ¾ sleeve. This must not be a fashion blouse.
- Black school trousers or plain black school skirt which **MUST** be knee length.
- *Girls must wear the Marks and Spencer school skirt T760112R or a very similar knee-length box pleat school skirt. We will not permit short skirts, short tube skirts, stretch skirts or fashion skirts of any kind.*
- *Trousers must be black school trousers, eg Marks and Spencer T761237 or T761225. Girls are not permitted to wear tight trousers, leggings, shorts, jeans, cargo pants, or fashion trousers of any kind.*
- Black v-neck school sweater or black v-necked school cardigan or black plain zipper.
- Plain black or white socks or plain black or natural tights.
- Plain black school shoes, or plain black boots or plain black wellington boots suitable for school
- **OUTDOOR WEAR** - Following recommendations from the pupils, a hooded sweatshirt for outdoor wear will be permitted, ONLY if it is plain black with a full-length zip, so that the tie can be seen at all times. Like all outdoor garments, it must be removed in class. Pupils should not wear brightly coloured sweatshirts in school.

BLAZER-STYLE JACKETS FOR BOYS AND GIRLS

- For S1-S4 – a black M & S fitted **blazer**-style jacket (or very similar garment) is **RECOMMENDED**.
 - For S5 – a black M&S fitted blazer-style jacket (or very similar garment) is **STRONGLY RECOMMENDED**.
 - For S6 – a black M&S fitted blazer-style jacket (or very similar garment) is **EXPECTED**.
- A high standard of uniform will be expected from all pupils who wish to join the Senior School of King's Park Secondary, because senior pupils are role models for the younger pupils and representatives of the school.

Skirt from M&S, or other box-pleated knee-length school skirt.

T76 0112R	black	Traditional Pleated Skirt with Adjustable Waist and Permanent Pleats		age 11, 12, 13, 14	£12
		SCHOOL SKIRT MUST BE KNEE LENGTH		age 15, 16, waist 28in, 29in, 30in, 31.5in	£15 £15 £15
					20% off



Blazer from M&S, or other similar plain black blazer suitable for school



T76 7503
Senior Girls'
Classic Tailored
Fit Blazer
£22 - £26

20% off



T76 7009
Boys' Classic
Tailored Fit
Senior Blazer
£22 - £26

20% off

OUR DRESS CODE continued

HATS AND CAPS

- Pupils may wish to wear these in winter on the way to school, but they must be removed when in the school building.
-

MAKE-UP/ JEWELLERY/HAIR/ACCESSORIES

- Light make-up only is permitted
- Jewellery should be kept to an absolute minimum.
- For girls who wish to wear a headband, a small plain black or white one will be permitted.
- The uniform should not be accessorised with gold/silver belts, chains, studs, etc.

OUTDOOR CLOTHING

- It is essential that all outdoor clothing is removed, immediately on entering the classroom.

PE KIT

- **INDOORS** – training shoes, navy t-shirt or polo shirt and shorts (or black shorts and black or white t-shirt or polo shirt)
- **OUTDOORS** – suitable clothing for cold and possibly wet weather, including track suit bottoms. However tracksuits are only permissible from October until March. Indoor kit must also be brought.
- **SWIMMING** – suitable swimwear. For example girls should wear a one-piece swimsuit or modest two-piece swimsuit, not a bikini.
- Pupils must bring PE kit for every single lesson. Even if they are injured and unable to take part fully in the lesson, they may be able to participate in a modified activity, and will be able to assist the teacher, eg with timekeeping. It is essential that they are dressed in PE kit.



Navy, White or Black T-Shirt or Polo Shirt

Navy or Black Shorts or a Skort



T761012

SKORT – OPTION for PE ONLY
Cross between cycling shorts and a skirt
£6.00-£12.00



**Fashion
clothing of
any kind**



A Vision for King's Park

We want King's Park Secondary to thrive as an

- ambitious,
- vibrant and
- caring community of learners
- and responsible citizens,

always working in partnership with others

- to improve and
- to meet the needs of every learner,

where resources, knowledge and skills are shared and used wisely,

and achievements are shared and celebrated.