



Fetlar Drive
Glasgow G44 5BL

Phone 0141 582 0150
Fax 0141 582 0151

King's Park Secondary School

Head Teacher
Mrs Margaret Barr

School Website
www.kingspark-sec.glasgow.sch.uk
Learning Community Website
www.scottishschools.info/KingsParkNLC

Depute Head Teachers
Mr Tom Feasby
Mrs Margaret Logan
Miss Lilian Marshall
Mrs Maura Thomson

SCHOOL UNIFORM 2012-13

As you know, we introduced a strict uniform policy from August 2011 following extensive consultation with parents and pupils about how to make our school uniform look smarter. This was very successful. In fact, when HM Inspectors from Education Scotland visited the school in February 2012, they commented on the large numbers of pupils who had said they were proud to wear the smarter school uniform, and felt that it had improved the work ethic and behaviour in school.

We rely very much on parents to support us, and we are pleased to have your backing – from school shirts and ties to black school skirts, black school trousers and black school footwear.

With the help of pupils and the Parent Council, a range of clothing was selected from **Marks and Spencer**, Argyle Street .

All pupils **must** wear the recommended uniform. Of course clothing may be bought from another stockist **as long as it meets the requirements for boys and girls described in 'OUR DRESS CODE'**.

Special School Uniform Evenings will take place again this year.

There will be one school uniform evening in King's Park Secondary, and 3 school uniform evenings in M&S Argyle Street:

- **Wednesday 30th May – 6.30 pm to 8.30 pm – in King's Park Secondary (for parents of P7)**
- **Thursday 21st June – 6 pm to 8 pm – in Marks and Spencer, Argyle Street**
- **Thursday 5th July – 6 pm to 8 pm – in Marks and Spencer, Argyle Street**
- **Thursday 9th August – 6 pm to 8 pm – in Marks and Spencer, Argyle Street**

Online Ordering – 'Your School Uniform' (from 20 June 2012)

As well as purchasing in store, and ordering through the usual M&S website, it will also be possible (from 20 June 2012) to order school uniform online from an M&S website especially for King's Park Secondary, which shows our approved items. We understand that almost all items will be available from 20 June, with all items available by mid-July. We understand that you will receive the same discounts and special offers as the main site (but please check this). The school will receive 5% of sales for school funds. Go to:

www.marksandspencer.com/yourschool

Look for our school crest and choose **King's Park Secondary School**

Or phone **0845 603 1 603**

King's Park Secondary School

OUR DRESS CODE

BOYS' UNIFORM

- School tie (on sale from the school office - £5)
- Plain white school shirt which buttons up to the neck - short or long sleeves
- Black school trousers
- *Trousers must be black school trousers, eg Marks and Spencer T764620D or T763600B. Boys are not permitted to wear tight trousers, leggings, shorts, jeans, cargo pants or fashion trousers of any kind.*
- Black socks
- Plain black school shoes, or plain black boots suitable for school
- Black v-neck school sweater or black school cardigan or black plain zipper
- OUTDOOR WEAR - Following recommendations from the pupils, a hooded sweatshirt for outdoor wear will be permitted, ONLY if it is plain black with a full-length zip, so that the tie can be seen at all times. Like all outdoor garments, it must be removed in class. Pupils should not wear brightly coloured sweatshirts or denim jackets in school.

GIRLS' UNIFORM

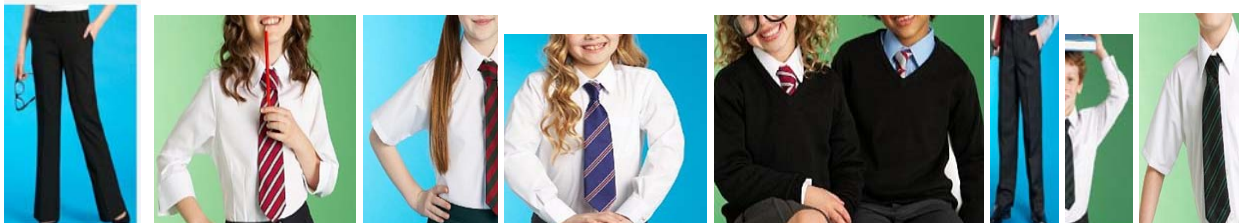
- School tie (on sale from the school office - £5)
- Plain white school blouse which buttons up to the neck – long, short or ¾ sleeve. This must not be a fashion blouse.
- Black school trousers or plain black school skirt which **MUST** be knee length.
- *Girls must wear the Marks and Spencer school skirt T760112R or a very similar knee-length box pleat school skirt. We will not permit short skirts, short tube skirts, stretch skirts or fashion skirts of any kind.*
- *Trousers must be black school trousers, eg Marks and Spencer T761237 or T761225. Girls are not permitted to wear tight trousers, leggings, shorts, jeans, cargo pants, or fashion trousers of any kind.*
- Black v-neck school sweater or black v-necked school cardigan or black plain zipper.
- Plain black or white socks or plain black or natural tights.
- Plain black school shoes, or plain black boots or plain black wellington boots suitable for school
- OUTDOOR WEAR - Following recommendations from the pupils, a hooded sweatshirt for outdoor wear will be permitted, ONLY if it is plain black with a full-length zip, so that the tie can be seen at all times. Like all outdoor garments, it must be removed in class. Pupils should not wear brightly coloured sweatshirts or denim jackets in school.

BLAZER-STYLE JACKETS FOR BOYS AND GIRLS

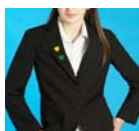
- For S1-S4 – a black M & S fitted **blazer**-style jacket (or very similar garment) is **RECOMMENDED**.
 - For S5 – a black M&S fitted blazer-style jacket (or very similar garment) is **STRONGLY RECOMMENDED**.
 - For S6 – a black M&S fitted blazer-style jacket (or very similar garment) is **EXPECTED**.
- A high standard of uniform will be expected from all pupils who wish to join the Senior School of King's Park Secondary, because senior pupils are role models for the younger pupils and representatives of the school.

Skirt from M&S, or other box-pleated knee-length school skirt.

T76 0112R	black	Traditional Pleated Skirt with Adjustable Waist and Permanent Pleats SCHOOL SKIRT MUST BE KNEE LENGTH		age 11, 12, 13, 14 age 15, 16, waist 28in, 29in, 30in, 31.5in	£12 £15 £15 £15
----------------------	-------	---	---	--	--------------------------



Blazer from M&S, or other similar plain black blazer suitable for school



T76 7503
Senior Girls'
Classic Tailored
Fit Blazer
£22 - £26



T76 7009
Boys' Classic
Tailored Fit
Senior Blazer
£22 - £26

King's Park Secondary School

OUR DRESS CODE continued

HATS AND CAPS

- Pupils may wish to wear these in winter on the way to school, but they must be removed when in the school building.

MAKE-UP/ JEWELLERY/HAIR/ACCESSORIES

- Light make-up only is permitted
- Jewellery should be kept to an absolute minimum.
- For girls who wish to wear a headband, a small plain black or white one will be permitted.
- The uniform should not be accessorised with gold/silver belts, chains, studs, etc.

OUTDOOR CLOTHING

- It is essential that all outdoor clothing is removed, immediately on entering the classroom.

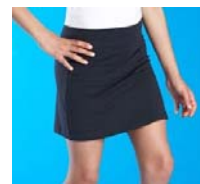
PE KIT

- INDOORS – training shoes, navy t-shirt or polo shirt and shorts (or black shorts and black or white t-shirt or polo shirt). Girls may wear a skort (cross between a skirt and cycling shorts - M&S product code T761012)
- OUTDOORS – suitable clothing for cold and possibly wet weather, including track suit bottoms. However tracksuits are only permissible from October until March. Indoor kit must also be brought.
- SWIMMING – suitable swimwear. For example girls should wear a one-piece swimsuit or modest two-piece swimsuit, not a bikini.
- Pupils must bring PE kit for every single lesson. Even if they are injured and unable to take part fully in the lesson, they may be able to participate in a modified activity, and will be able to assist the teacher, eg with timekeeping. It is essential that they are dressed in PE kit.



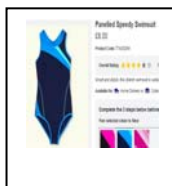
Navy, White or Black T-Shirt or Polo Shirt

Navy or Black Shorts or a Skort



T761012

SKORT – for PE ONLY
Cross between cycling shorts and a skirt.



QUESTIONS AND ANSWERS

QUESTION *What happens if pupils come to school not in full school uniform?*

ANSWER We feel strongly that full school uniform is essential, and we believe that we have parents' support. So if pupils come to school not in full school uniform, we will assume that they have done so without their parents' permission, and we will contact parents to arrange for them to return home immediately to change into full school uniform. We will not accept excuses such as 'my school trousers are in the wash.' Young people are able to be responsible for making sure that their school uniform is clean and ready to wear. Every day.

Pupils who don't wear full school uniform will not be deprived of their education.
Pupils who don't wear full school uniform will not benefit from privileges.

QUESTION *Is the school insisting on M&S skirt T76 0112R?*

ANSWER This knee-length box pleated school skirt is the King's Park school skirt. Girls who do not wish to wear this skirt must wear a box-pleated knee-length school skirt, or plain black school trousers. Fashion skirts and fashion trousers will not be permitted.

QUESTION *My son/daughter is not a standard size, and M&S don't make school uniform in their size. What should I do?*

ANSWER For non-standard sizes, we recommend:

- R W Stevens, 83 Deanston Drive, Shawlands, G41 3AQ. Tel 0141 632 8617
- Campbell's, 352-358 Victoria Road, Govanhill, G42 8YW. Tel 0141 423 1455

QUESTION *I could have some difficulty with this new policy. Can I speak to someone about it?*

ANSWER Yes, of course. Please contact the school.

QUESTION *Can I place an order for school uniform at school?*

Sorry no. The school cannot take orders. If ordering from M&S, you must buy directly from them. The school office will continue to sell school ties.

QUESTION *Why is the King's Park uniform so strict?*

ANSWER Wearing of our school uniform is vital in improving security and the positive ethos of our school. It raises the profile of our school in the local community. It sends the message that we are proud of our school, that we are here to work, and that we take our learning and responsibilities seriously.

Before we introduced the new strict uniform policy in August 2011, we were very concerned about the way some pupils had adapted the school uniform in a way which was inappropriate. Many parents contacted us with their concerns. However, pupils and parents now remark on the much smarter image.

QUESTION *Where can I buy the school tie?*

ANSWER Our school tie and senior school tie are on sale at the school office throughout the year - £5. The school tie will also be on sale in M&S on the special Instore Uniform Evenings

PLEASE REMEMBER

- The uniform is BLACK.
- Shirts and blouses must be white, and designed to button at the collar, so that the school tie can be worn properly, right up to the collar.
- Girls – You must wear the school skirt at knee length. Short skirts or tight skirts will not be permitted.
- The school skirt is Marks & Spencer T760112R (or a similar knee-length box pleat school skirt).
- Pupils must wear black school shoes or black boots or black wellington boots suitable for school.

